



Corporate **BROCHURE**

www.stephclairesynergylimited.com



CONTENT

Welcome Message	02
Introduction	03
About Us	04
Our Guiding Principles	05
Organisational Structure	06
Our Professional Services	07
Marine Logistics	07
Procurement	08
OCTGs	09
HSE	10
Internal Audits	11
Manpower Supply	12
Consultancy	12
Our Partners	13
Policies	14



Okoli Amarachi Stephanie
MD/CEO

Welcome Message

Welcome to Steph Claire Synergy Limited, I am excited to welcome and introduce our company to you where efficiency is a way of living and excellence thrives. We are operators in the oil & gas sector with primary interest in marine logistics, HSE, procurement, OCTGs, audits, manpower supply and much more.

We are committed to our mission and vision in being best service providers within our domain and are always exploring better ways of achieving efficiency.

As an organization, we are delighted that you have taken an interest in us either as a partner, consultant, client or associate and we hope we can build together and grow together as we are constantly on a lookout for more avenues for collaboration.

Once again, I welcome you to Steph Claire Synergy Limited, please explore our website for more information about our services and mandate.

INTRODUCTION

Steph Claire Synergy Limited is a foremost energy company providing unparalleled service to the oil & gas, maritime, construction and related sectors using knowledge based tools and innovative technology to create value and manage sustainable dependencies wherever we go. As an indigenous company, she is registered with the Nigerian corporate affairs commission (RC 1961577) to carry out businesses within the Oil and Gas upstream, midstream and downstream value chain. Her core area of interest is in the marine logistics, procurement, HSE, audits and OCTGs based products and services.

Steph Claire Synergy Limited is managed by seasoned professionals within and outside the oil and gas sector with years of experience under their belt. Our people are problem solvers with specialist knowledge. The primary goal of the company is to provide engineering, technical and other specialized services in an easy, scalable and affordable way to our various clients and stakeholders.

We are poised to provide a conducive working environment in line with best practices and standards and treat every project with expert management care that is empathetic to schedule, quality and budget concerns of our clients. We are also committed to providing unparalleled service to our clients thus creating an environment that fosters development where people can thrive through their diversities. Be a part of our story today as we meet society's ever- growing demand for better service delivery.

Steph Claire Synergy Limited is head quartered in Port Harcourt with several tentacles and partners spreading nationwide.



ABOUT US

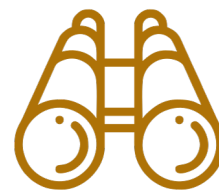
We are a diversified team of highly specialized professionals with expertise and intelligence, catering to an array of superlative services. We are positioned to navigate the new normal in a post Covid world, delivering what matters most: safety, efficiency, reliability, sustainability in carrying out various energy and engineering based project works onshore and offshore.

We are interested in nurturing growth and as such create an environment that encourages codependence and collaboration. Our committed workforce is made up of engineers, technicians, scientists and seasoned project managers. With a network of partners across Nigeria and bordering on international markets, we are well positioned to meeting the growing needs of our clientele and provide valuable consultancy advisory services where needed.



OUR MISSION

To create sustainable and profitable models where continues growth is part of our everyday process and encourage participatory excellence in every aspect of our work.



OUR VISION

To be a benchmark for standardization, backed by professionalism and excellent service delivery where integrity leads with a keen focus on quality and safety.

OUR GUIDING PRINCIPLES

The pillars on which we stand that guide our mandate and allow us to carry out our mission are:



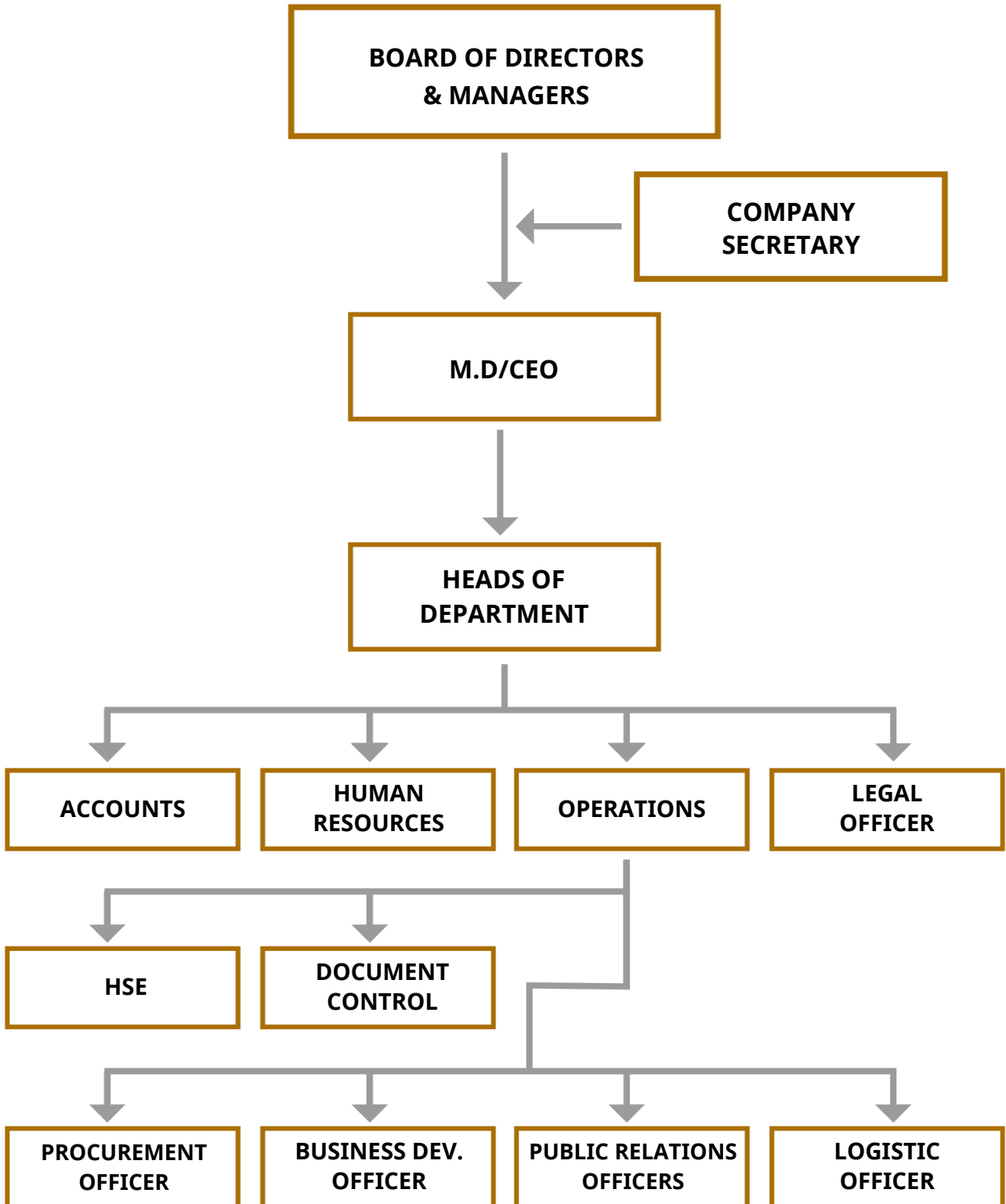
As a company, we pride ourselves in getting the job done within specified project boundaries; we innovate to realize our clients' ideas. We are positioned to serve a diverse list of clients and have over the years had affiliations with the Government, private organizations, individuals and international partners. With a collective experience of over five years, we believe we have the right team and resources to meet every need.

Steph Claire Synergy Limited provides leading professional services in marine logistics involving tug boats and barges, tubular and procurement, different types of audits and asset integrity tests, we train and provide personnel for health, safety and environmental works as well as DPAs.

A more tailored distribution of these services are provided in the service section of this document.



ORGANISATIONAL STRUCTURE



OUR PROFESSIONAL SERVICES

Our services are designed to support our customers by offering fully technological solutions at an affordable cost. What is more is that we understand our client's needs, hence our approach is to use a scalable program that suits your need, and we always keep to our word.

MARINE LOGISTICS

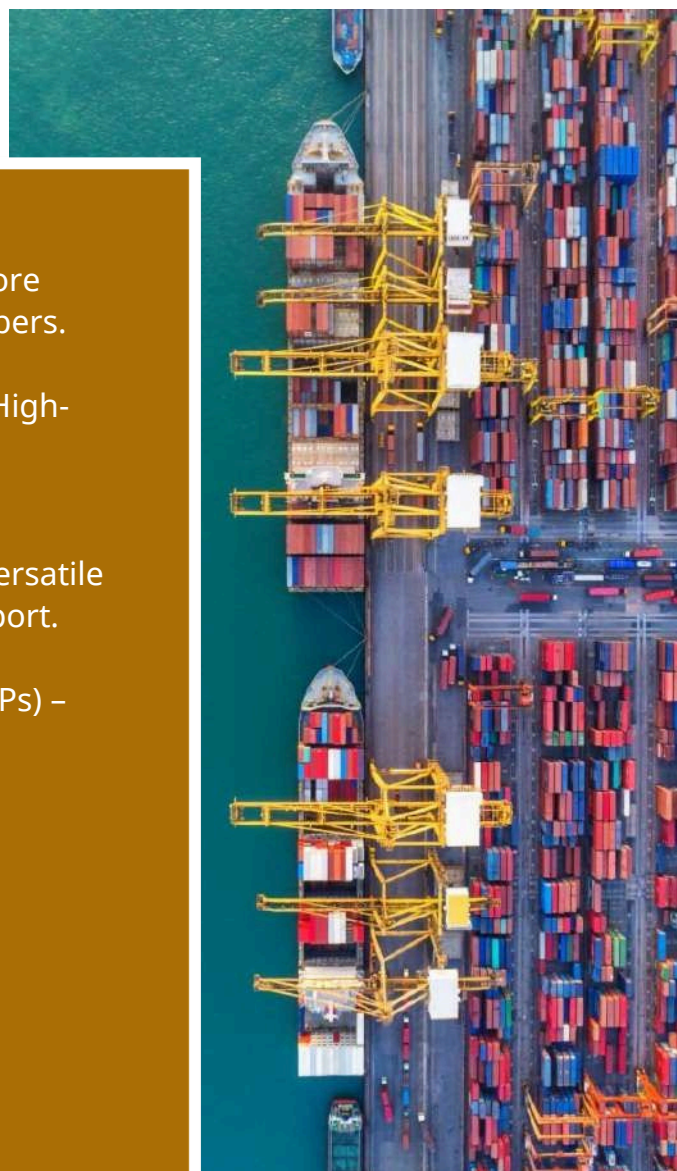
At Steph Claire Synergy, we provide specialized marine logistics solutions tailored to support offshore operations, vessel supply, and transportation needs in the oil and gas sector.

Our marine services cover a wide range of marine support needs, including:

- Security Vessels – Ensuring offshore safety and asset protection.
- Anchor Handling & Towing Vessels – Supporting offshore rig positioning, anchor handling, and towing operations.
- Platform Supply Vessels (PSVs) – Delivering essential supplies to offshore platforms.
- Survey Vessels – Equipped for hydrographic, geophysical, and environmental surveys.



- Accommodation Vessels – Providing offshore lodging and support facilities for crew members.
- Fast Supply Intervention Vessels (FSIVs) – High-speed transport of personnel, cargo, and emergency response.
- Multipurpose Support Vessels (MPSVs) – Versatile vessels for subsea and offshore project support.
- Self-Elevating Work Over Platforms (SEWOPs) – Mobile platforms for well intervention and maintenance.



PROCUREMENT

At Steph Claire Synergy, we specialize in delivering top-quality procurement services tailored for the oil and gas industry, ensuring seamless supply chain management, cost efficiency, and strict regulatory compliance. Leveraging our extensive industry knowledge and robust supplier network, we provide high-performance materials, equipment, and chemicals essential for successful operations.

Our Procurement Services:

1. **Drilling Fluids & Chemicals:** Comprehensive supply of drilling fluids and production chemicals, including various drilling muds, weighting materials, shale inhibitors, and corrosion inhibitors.
2. **Equipment & Material Procurement:** Provision of essential equipment and materials such as pipes, valves, pumps, compressors, drilling rigs, safety gear, and electrical supplies.
3. **Lubricants & Industrial Chemicals:** Supply of high-performance lubricants and specialty chemicals to enhance equipment efficiency and longevity.



4. Logistics & Supply Chain Solutions: Streamlined procurement processes through reliable logistics services, including freight forwarding, customs clearance, warehousing, and transportation of heavy equipment.

5. Maintenance, Repair & Operations (MRO): Provision of spare parts, asset integrity solutions, and maintenance services to ensure uninterrupted operations.

6. Environmental & Safety Solutions: Supply of safety and environmental compliance products, including spill containment materials, emission control equipment, and hazardous waste management solutions.



OCTGs

Steph Claire Synergy offers comprehensive Oil Country Tubular Goods (OCTG) solutions to enhance the integrity and efficiency of drilling and production operations. Our services include:

- **Supply of OCTG Materials:** Providing high-quality casing, tubing, drill pipes, couplings, and premium connections.
- **OCTG Inspection & Testing:** Ensuring compliance with API, ISO, and industry standards through rigorous inspection and testing protocols.
- **Installation & Running Services:** Executing safe and efficient deployment of OCTG products for well construction.
- **Threading & Pipe Coating:** Applying advanced threading techniques and protective coatings to extend the lifespan and performance of OCTG components.
- **Maintenance & Repair:** Conducting preventative maintenance and refurbishment to minimize downtime and enhance operational efficiency.

By integrating these services, Steph Claire Synergy ensures that clients receive reliable and effective OCTG solutions tailored to their specific operational needs.



HEALTH, SAFETY AND ENVIRONMENT (HSE)

Steph Claire Synergy offers comprehensive Health, Safety, and Environment (HSE) services to ensure workplace safety and environmental compliance in the oil and gas industry. Our offerings include:

1. Personal Protective Equipment (PPE): Supplying high-quality safety gear such as helmets, goggles, fire-resistant clothing, respiratory protection, and hearing protection.
2. Life-Saving Appliances (LSA) & Fire-Fighting Appliances (FFA): Providing, inspecting, and maintaining essential safety equipment, including life jackets, lifeboats, fire extinguishers, and emergency lighting systems.
3. HSE Consultancy & Compliance Audits: Ensuring adherence to local and international safety regulations through expert consultancy and thorough audits.



4. Workplace Safety Training: Offering certified programs in hazard management, emergency response, and offshore safety to equip personnel with necessary skills.

5. Environmental Risk Assessment: Evaluating environmental impacts and implementing effective mitigation strategies to promote sustainability.

6. Waste Management & Spill Response: Managing hazardous waste, containing oil spills, and conducting remediation efforts to protect the environment.

By integrating these services, Steph Claire Synergy is committed to fostering a safe and compliant operational environment for its clients.



INTERNAL AUDITS

We carry out independent and objective internal audits, inspections and valuations targeted at adding value and improving your organization's operations. Our audits span across compliance, operational, financial and information technology. Our expert processes explore the use of frameworks that take into consideration the environment, risk assessment, control activities, information and monitoring.

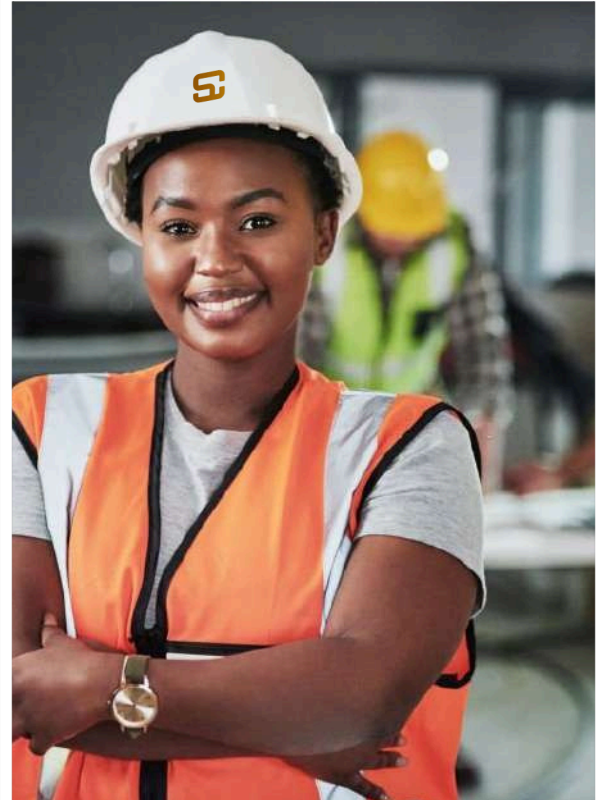
At Steph Claire, our audits are poised to ensure that your organization's risk management, governance and internal control processes are operating effectively. We provide support that helps our client set up policies and controls, asset register, facility management, inspection and test plans and monitoring guidelines. We also consider all stages of the equipment life cycle, from conception, to engineering and design, construction, operation, inspection, and finally to repair/replacement when necessary.



MANPOWER SUPPLY

Steph Claire Synergy limited offers certified personnel to seagoing vessels, offshore sites, oil rigs and platforms. From DPAs to able seamen, deck hands and officers, maritime experts, drillers and well engineers.

We are actively involved in the training of field workers in the search, exploration, drilling, and extraction of hydrocarbon both offshore and onshore. Our trainings within the Oil & Gas value chain includes but is not limited to: Piping & Plant Design, Audit Training, QHSE Training, SAP Training, Process Instrumentation & Control/Automation and much more.



CONSULTANCY

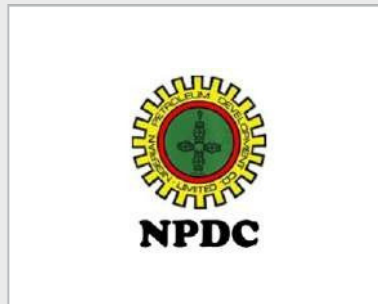
We consult for a wide range of services. Our priority is to proffer long lasting solutions to our esteemed customers/clients, protection, preservation of our workforce, assets, environmental health, safety and security of the work place.

Our consultancy service is highly organized and yet flexible enough in dealing with a wide range of activities that comes our way. We have qualified, experienced, certified, energetic and flexible people who can deal with the ebb and flow of your projects management life cycle from project managing scheduling, trending, updating and closure.

We are known for impeccable record wherever we are called upon to deliver projects at short notices working as part of a team.



OUR PARTNERS





CASHES POLICY

Steph Claire Synergy Limited cashes policy ensure that all risks associated with health, safety, environment and social issues, arising from activities related to its operations are systematically planned, controlled and reviewed. Steph Claire Synergy Limited is committed to meeting all applicable legal/regulatory and other requirements, satisfying its identified stakeholders and ensuring continual improvement of its HSE-ME.

HSE POLICY STATEMENT

Steph Claire recognizes its legal, moral and economic responsibilities towards the health of its employees, safety of men, materials/assets and operation and protection of the environment. In fulfilling its responsibilities, the Company will be guided by the laws, standards and procedures of its clients.

Our statement of general policy is:

- à To provide adequate control of the health and safety risks arising from our work activities. To consult with
- à our employees on matters affecting their health and safety. To provide and maintain safe plant and
- à substance. To ensure safe handling and use of substances.
- à

- à To provide information, instruction and supervision for employees. To
- à ensure all employees are competent to do their tasks, and to give them adequate training when needed. To
- à Prevent accidents and cases of work-related ill health. To maintain safe and healthy working conditions. To
- à review and revise this policy as necessary and at regular intervals
- à

ENVIRONMENT STATEMENT

- à Our company is committed to ensuring clean and healthy environment especially in the course of our operation. We take
- à environmental sanitation programme serious especially the National Environmental carried out in the country. Structure used and disposal of injurious chemical shall be in
- à accordance with Environmental Agency guideline. Due regard must be paid to reduction of noise at all
- à course, so also are dust and fumes. It is expected of every employee and third parties to provide healthy and
- à environmentally acceptable conditions both at home and work place.

SECURITY STATEMENT

- à As part of our Security measure, our company ensure that all facilities where staff work, reside have sound security plan in place. Improve the
- à security awareness of both our employees and third parties associated with our operations. We
- à uphold security information dissemination to all our employees both in the offices and logistic base stations. The security of the
- à company's property and employees will be given maximum attention. All our employees are provided with
- à company identity cards and the
- à staffs are regularly briefed of the current security risks.

QUALITY POLICY

Steph Claire Synergy Limited recognizes that maintaining high Quality standards in all operations is key to our success and reputation. To this end, the Company strives to consistently provide services that meet the requirements and expectations of our customers and all interested parties.

As a commitment to this policy and its continual improvement, a documented Quality Management (QMS) which meets the requirements of ISO 9001:2015 has been established with the Managing responsible for determining measureable objectives. The QMS is periodically reviewed to ensure continual improvement. In our Service delivery to achieve this we will:

- à Continually monitor and improve the level of our client's satisfaction with our performance. Ensure our works
- à comply with relevant Steph Claire Synergy Limited operational procedures. Ensure all quality related
- à issues are effectively reported and addressed. Ensure all employees have
- à sufficient induction, and training to undertake their work safely and effectively. Encourage a culture of
- à cooperation and participation regarding quality issues. Strive to deliver our products and services on
- à time and on budget. Strive to recruit and retain high quality employees
- à Comply with applicable legislation, codes and standards





STEPH CLAIRE

*For more information, please contact us today
through our official channels.*

#8 chief Godspower Ajikere Close Off Stadium
Road, Rivers state, Port Harcourt

www.stephclairesynergylimited.com

info@stephclairesynergylimited.com
stephclairesynergylimited@gmail.com

+234 816 514 2199

